

Pcounter

- ❖ Cost recovery and Control
- ❖ Client billing with matter numbers
- ❖ User authentication for Netware and Active Directory
- ❖ Easy server central deployment
- ❖ Locally attached workstation printer tracking
- ❖ Macintosh and Linux Workstation support
- ❖ Print quotas, detailed and client billing
- ❖ Low Cost

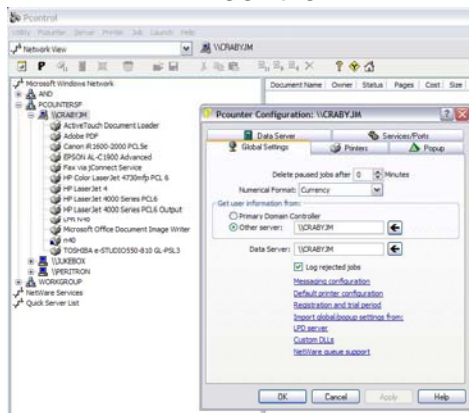
How does it work?

Pcounter takes control of any server controlled printer. The Pcounter ports replace conventional ports and give Pcounter complete control of print jobs. Because Pcounter runs on the server and the printers are shared out to the workstations a client components is not necessary. For Netware Pcounter integrates into the NDPS Manager.

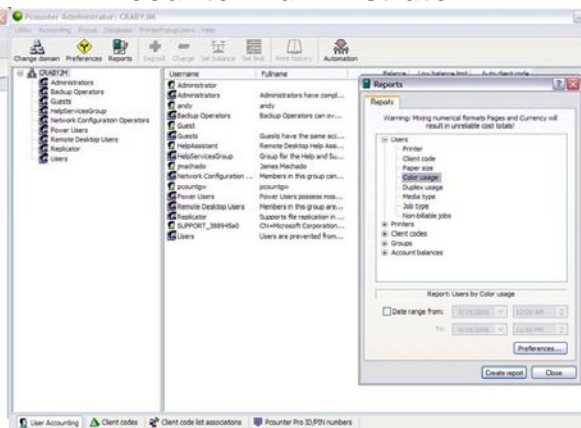
How is Pcounter Administered?

Pcounter has two major administrative components, Pcontrol and Pcounter Administrator. Pcontrol is designed for network administrators to configure Pcounter on how to act; while Pcounter Administrator is designed for local administrators to do the daily tasks such as, run reports, manage client codes, and modify account balances.

Pcontrol



Pcounter Administrator



Does Pcounter track local printers on workstations?

Yes! WSManger allows the network administrator to push Pcounter to the workstation from the server, and track locally attached printers, such as a USB printer (A per workstation license fee applies).

Does Pcounter track Macintosh print jobs?

Pcounter can track print jobs from any platform, including Macintosh and Linux workstations. For more information on how Pcounter works with Macintosh computers please see the MAC support area of our web site.

Who uses Pcounter?

Pcounter is used by Schools, Law firms, Engineering and Architectural firms, as well as Small businesses. Any organizations that wish to control their printing costs would find Pcounter a great tool.

What printers are compatible with Pcounter?

Pcounter can track the print jobs of any PostScript or PCL printer, from all major manufacturers such as HP, Xerox, Lexmark, Canon, and more. Also included are Ricoh RPCS, Canon Bubble Jet, and Epson inkjet and laser printers. Support for TIFF printing is included, and Pcounter also tracks plot size on HPGL/2 and PostScript plotters.

Does Pcounter track Color vs. B&W prints or different paper sizes?

Pcounter can check for color enabled jobs and flag the job as color. A Color multiplier is used to change the price for color if desired. The new Pcounter port also allows for many SNMP enabled printers to tell Pcounter exactly how many pages were color in a specific job.

What kind of reports can I print?

Pcounter has a varied range of reports. Reports can be run by any two variables. Variables include, Client Code, User, Printer/Copier, Color Usage, Groups, Duplex and many more. The Pcounter.log file is a CSV file, this makes it very easy to parse with separate programs, or import into a custom database.

Scalability Options

Pcounter has many additional products that allow for a wider range of solutions. Below is a list of some of the products and their function. More information on these products can be found at www.pcounter.com.

Pcounter Pro – Allows Pcounter to track walk up copies on most copiers and MFPs through the use of a PC20 Terminal. Also allows for secure print release of print jobs to MFP.

Pcounter Station –secure or non-secure print release function.

TBS9500 -- Works with Pcounter Station to automate user deposits into the Pcounter system.

Pcounter XAuditron (EIP) -- Allows Pcounter to manage Xerox Auditron or EIP enabled devices centrally from the Pcounter server.

Still have questions?

Please contact AND Technologies at sales@andtechnologies.com or call us at (415) 701-9222 ext 205.